



8 KINGFISHER DRIVE

■ AUCTIONEERS ■
SURVEYORS **PIKE & SMITH KEMP** VALUERS ■
■ ESTATE AGENTS ■

8 Kingfisher Drive Maidenhead, Berkshire, SL6 8EL

“A modern townhouse in a popular residential close located 0.7 mile from Maidenhead Town Centre”

Conveniently located within easy walking distance of the River Thames and Maidenhead town and station, with lovely rural walks nearby, is this spacious and very well presented 11 year old three bedroom town house situated on a private development, with a south facing garden and parking. The M4 and M40 motorway are easily accessible providing access to Heathrow and Central London. Rail services to London Paddington serviced by the Elizabeth line are available from Maidenhead Station.

Council Tax Band: E EPC Rating: C

PRICE: £575,000 FREEHOLD



Pike Smith & Kemp
22 Queen Street, Maidenhead
Berkshire SL7 1HZ

maidenhead@pikesmithkemp.co.uk
01628 621177



Accommodation summary

Ground Floor:

ENTRANCE HALL

LIVING ROOM

KITCHEN

CLOAKROOM

First Floor:

MASTER BEDROOM WITH EN-SUITE BATHROOM

DOUBLE BEDROOM

Second Floor

DOUBLE BEDROOM

SHOWER ROOM

Outside:

SOUTH FACING REAR GARDEN

TWO ALLOCATED PARKING SPACES





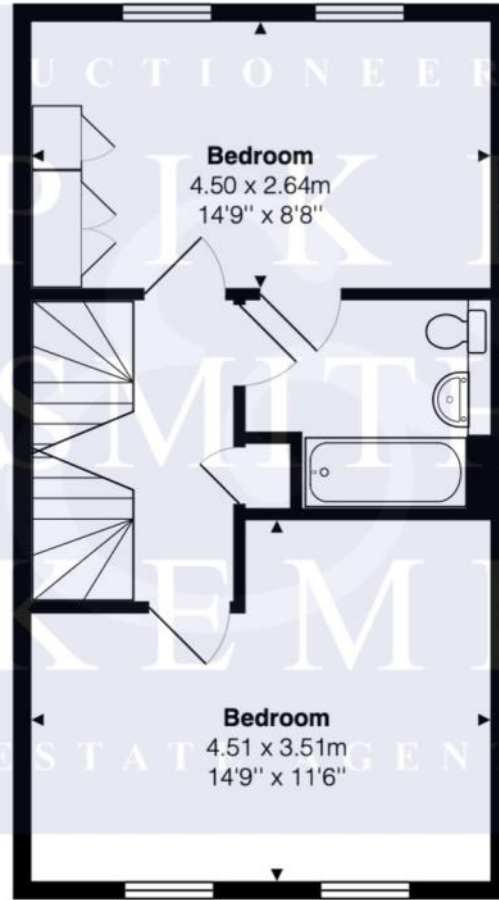
Bourbon St.

HERBS
thyme dill sage
basil oregano
rosemary tarragon chives
chives parsley cilantro mint



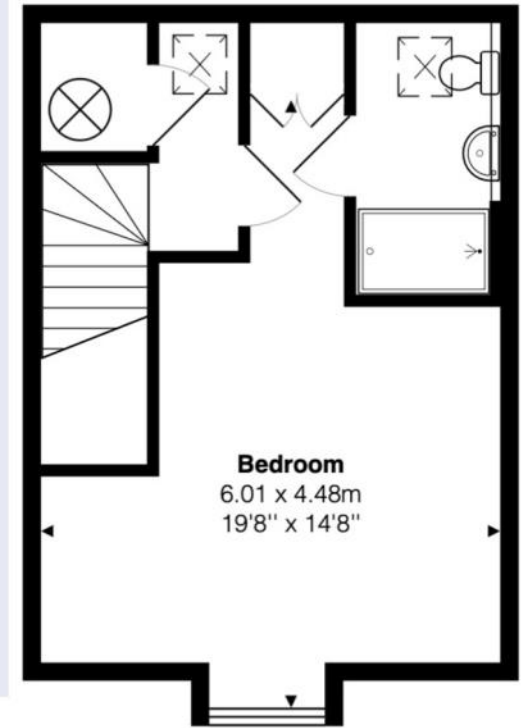
Ground Floor

Approx. Floor Area
453 Sq.Ft.
(42 Sq.M)



First Floor

Approx. Floor Area
407 Sq.Ft.
(38 Sq.M)



Second Floor

Approx. Floor Area
308 Sq.Ft.
(29 Sq.M)

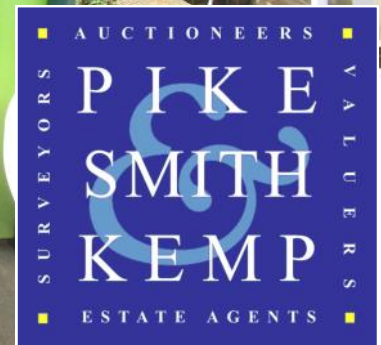
The approximate total area for the elements of the property represented on the floorplan is 109 SqM (1169 Sq.Ft)

Kingfisher Drive, Maidenhead, Berkshire, SL6 8EL

This floor plan provided by Expert Survey Solutions Ltd is for indicative guidance only. Whilst every attempt has been made to ensure the accuracy of the floor plans contained here, measurements of doors, windows and rooms are approximate and no responsibility is taken for any error, omission or mis-statement. Details shown on this floorplan including all measurements, areas and proportions cannot be guaranteed by either the provider or marketing estate/letting agency and should not be relied upon. If there is any area where accuracy is required, please contact the appropriate agent for clarification.







Pike Smith & Kemp
22 Queen Street, Maidenhead
Berkshire SL7 1HZ
maidenhead@piksmithkemp.co.uk
01628 621177